



A Brighter Solution

AMP DISPLAY INC.

SPECIFICATIONS

5.7.COLOR VGA TFT MODULE

CUSTOMER:	
CUSTOMER PART NO.	
AMP DISPLAY PART NO.	AM640480GM QW-T00H (TF640480-02-0)
APPROVED BY:	
DATE:	

APPROVED FOR SPECIFICATIONS

APPROVED FOR SPECIFICATION AND PROTOTYPES

AMP DISPLAY INC

9856 SIXTH STREET RANCHO CUCAMONGA CA 91730
TEL: 909-980-13410 FAX: 909-980-1419
WWW.AMPDISPLAY.COM

Preliminary

The contents of this document are confidential and must not be disclosed wholly or in part to any third part without the prior written consent of AMPIRE CO., LTD

RECORD OF REVISION

Revision Date	Page	Contents	Editor
2006/12/21	-	New Release	Edward

Preliminary

The contents of this document are confidential and must not be disclosed wholly or in part to any third part without the prior written consent of AMPIRE CO., LTD

1. INTRODUCTION

Ampire Display Module **AM640480** is a color active matrix TFT-LCD that uses amorphous silicon TFT as a switching device . This model is composed of a 5.7inch TFT-LCD panel, touch panel, a driving circuit and LED backlight system . This TFT-LCD has a high resolution (640(R.G.B) X 480) and can display up to 262,144 colors .

1-1. Features

- VGA Resolution
- 6 Bits color driver with 1 channel TTL interface
- Wide range operation temperature

1-2. Applications

- Portable TV
- Car PC
- Industrial application
- HMI (Human machine interface)

2. PHYSICAL SPECIFICATIONS

Item	Specifications	unit
Display resolution(dot)	640RGB (W) x 480(H)	dots
Display area	116.16 (W) x 87.12 (H)	mm
Pixel pitch	0.1815 (W) x 0.1815 (H)	mm
Color configuration	R.G.B Vertical stripe	
Overall dimension	127.0(W)x98.43(H)x7.4(D)---(Typ)	mm
Surface treatment	Antiglare , Hard-Coating(3H)	
Brightness	220 nit(typ)	cd/m ²
Contrast ratio	300 : 1	
Backlight unit	LED	
Display color	262,144	colors
Viewing Direction	6 O'CLOCK	
Display Mode	Normally White	

Preliminary

The contents of this document are confidential and must not be disclosed wholly or in part to any third part without the prior written consent of AMPIRE CO., LTD

3. ABSOLUTE MAX. RATINGS

ITEM	SYMBOL	MIN	MAX	UNIT	NOTE
Power Supply Voltage	Vcc	-0.5	5	V	
Signal Input Voltage	DCLK , DE R0~R5 G0~G5 B0~B5	-0.5	Vcc + 0.5	V	
Operation Temperature	Top	-10	60	°C	(1)
Storage Temperature	Tstg	-20	70	°C	(1)
Forward Current(per LED)	If	-	30	mA	
Reverse Voltage(per LED)	VR	-	5	V	
Pulse forward Current(per LED)	I _{fp}	-	100	mA	(2)

NOTE :

1. If users use the product out off the environment operation range (temperature and humidity) , it will concern for visual quality.
2. I_{fp} conditions : Pulse Width = 0.1msec and Duty = 1/10

Preliminary

The contents of this document are confidential and must not be disclosed wholly or in part to any third part without the prior written consent of AMPIRE CO., LTD

4. ELECTRICAL CHARACTERISTICS

4-1 TFT LCD Module voltage

ITEM	SYMBOL	MIN	TYP	MAX	UNIT	NOTE
Power Voltage For LCD	V _{CC}	3.0	3.3	3.6	V	(1)
Power Voltage For LED	V _{DD}	2.7	3.3	5.0	V	
Logic Input Voltage	V _{IH}	V _{CC} *0.7	-	V _{CC}	V	
	V _{IL}	0	-	V _{CC} *0.3	V	

NOTE : 1. V_{cc} – dip condition :

When $2.7V \leq V_{cc} < 3.0V$, $t_d \leq 10ms$

$V_{cc} > 3.0V$, V_{cc} – dip condition should be same as V_{cc} turn-on condition

4-2 TFT LCD current consumption

ITEM	SYMBOL	MIN	TYP	MAX	UNIT	NOTE
LCD Power Current	ICC	-	TBD	TBD	mA	(1)
LED Power Current	IDD	-	TBD	TBD	mA	(2)

NOTE : (1) Typ : under 64 gray pattern Max : under black pattern



(a) 64 Gray Pattern



(b) Black Pattern

(2) Typ : When V_{DD} is 3.3V Max : When V_{DD} is 2.7V

4-3 Power Signal sequence

$t1 \leq 10ms$

$50ms \leq t2$

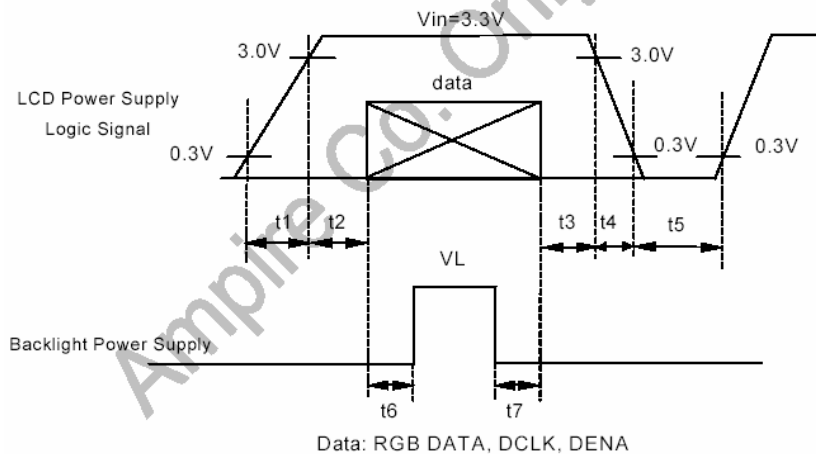
$0 < t3 \leq 50ms$

$0 < t4 \leq 10ms$

$1sec \leq t5$

$200ms \leq t6$

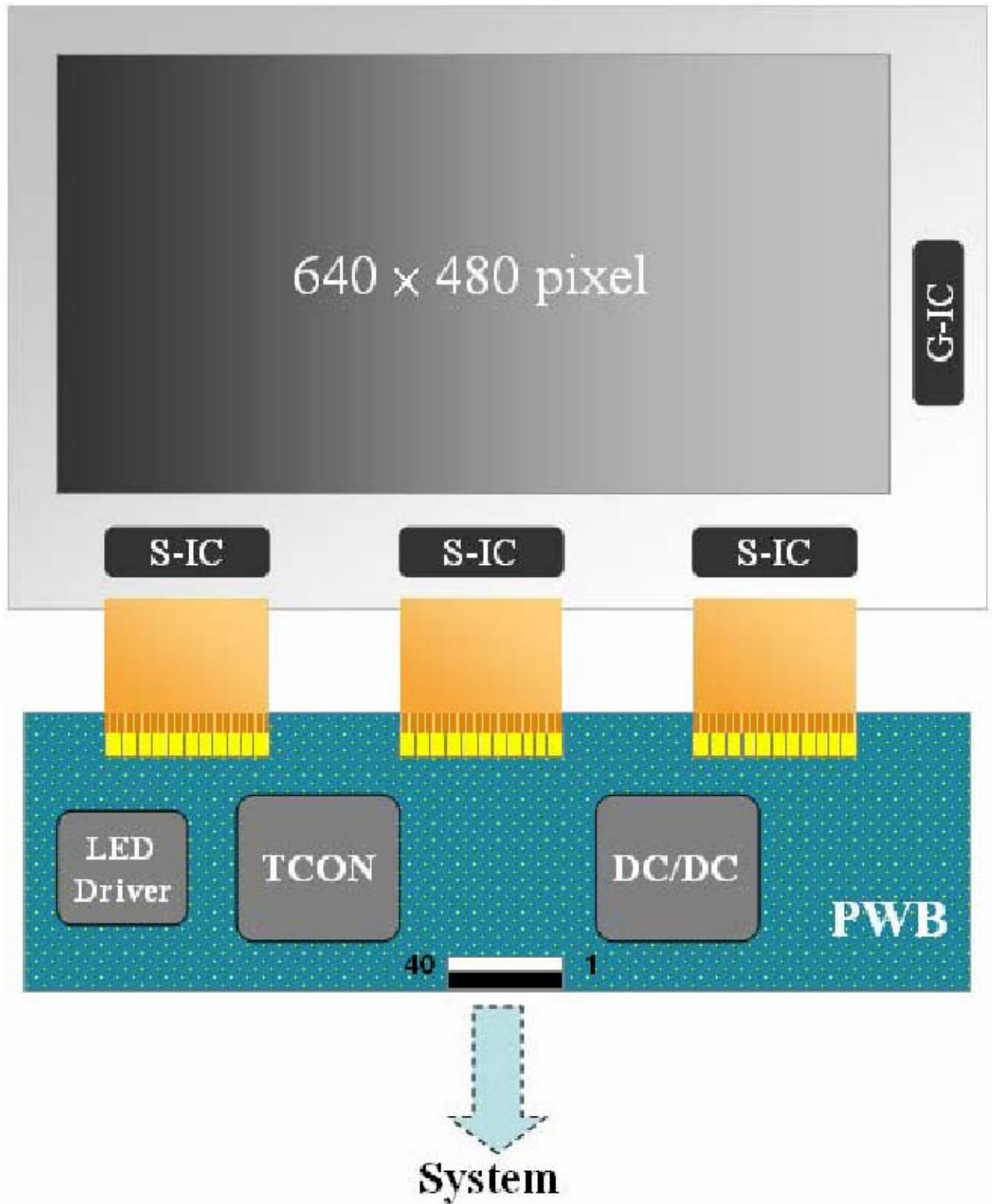
$200ms \leq t7$



Preliminary

The contents of this document are confidential and must not be disclosed wholly or in part to any third part without the prior written consent of AMPIRE CO., LTD

5. BLOCK DIAGRAM



Preliminary

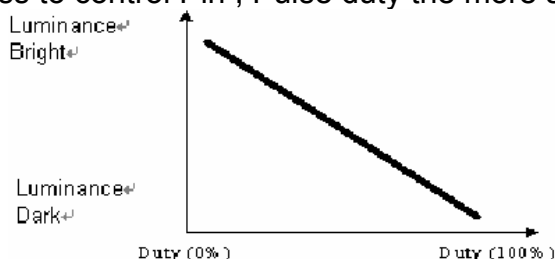
The contents of this document are confidential and must not be disclosed wholly or in part to any third part without the prior written consent of AMPIRE CO., LTD

6. INTERFACE

Pin no	Symbol	Function
1	U/D	Up or Down Display control
2	DMS	Selection DE or SYNC
3	Hsync	Horizontal SYNC
4	Vcc	Power supply for digital circuit
5	Vcc	Power supply for digital circuit
6	Vcc	Power supply for digital circuit
7	Vcc	Power supply for digital circuit
8	Vsync	Vertical SYNC
9	DE	Data Enable
10	Vss	Power ground
11	Vss	Power ground
12	ADJ	Adjust for LED brightness
13	B5	Blue data 5(MSB)
14	B4	Blue data 4
15	B3	Blue data 3
16	Vss	Power ground
17	B2	Blue data 2
18	B1	Blue data 1
19	B0	Blue data 0(LSB)
20	Vss	Power ground
21	G5	Green data 5(MSB)
22	G4	Green data 4
23	G3	Green data 3
24	Vss	Power ground
25	G2	Green data 2
26	G1	Green data 1
27	G0	Green data 0(LSB)
28	Vss	Power ground
29	R5	Red data 5(MSB)
30	R4	Red data 4
31	R3	Red data 3
32	Vss	Power ground
33	R2	Red data 2
34	R1	Red data 1
35	R0	Red data 0(LSB)
36	Vss	Power ground
37	Vss	Power ground
38	DCLK	Clock Signals
39	Vss	Power ground
40	L/R	Left or Right Display Control

NOTE :

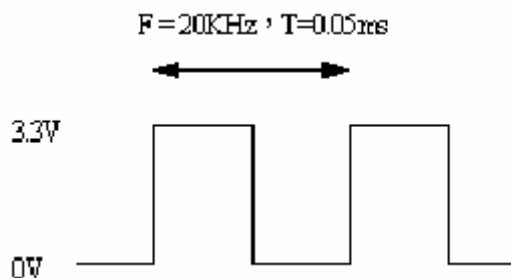
1. ADJ adjust brightness to control Pin , Pulse duty the more small the more bright



Preliminary

The contents of this document are confidential and must not be disclosed wholly or in part to any third part without the prior written consent of AMPIRE CO., LTD

2. ADJ signal = 0 ~ 3.3V , operation frequency : 20Khz



3. GND Pin must ground contact , can not be floating

4. U/D and L/R are controled function

L/R	U/D	Function
1	0	Normally display
0	0	Left and Right opposite
1	1	Up and Down opposite
0	1	Left and Right opposite , Up and Down opposite

5. DMS (Selection DE / SYNC mode)

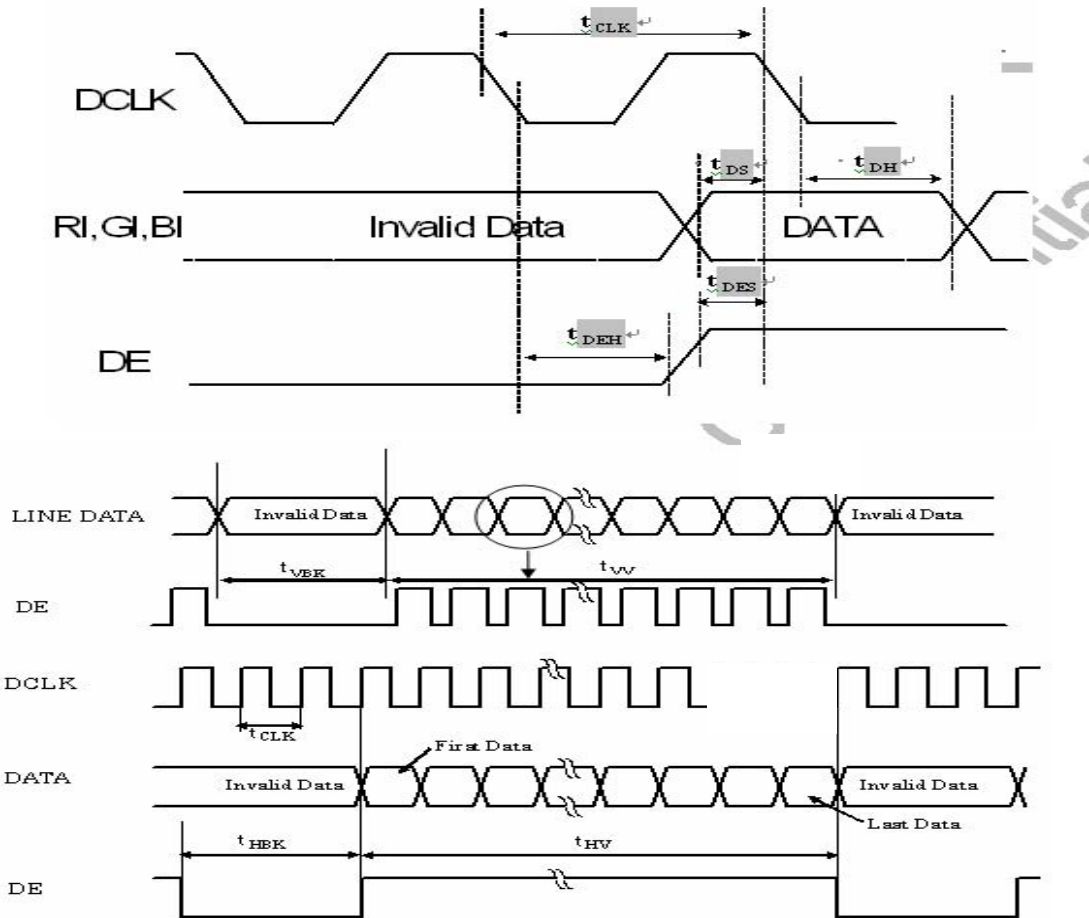
DMS	Function
1	DE Mode
0	SYNC Mode

Preliminary

The contents of this document are confidential and must not be disclosed wholly or in part to any third part without the prior written consent of AMPIRE CO., LTD

7. INPUT SIGNAL (DE mode only) :

7-1 Timing chart



7-2 Timing Specification

ITEM	Symbol	SPEC			UNIT	
		Min	Typ	Max		
DCLK Frequency	f_{CLK}	5	-	40	MHZ	
DCLK Period	t_{CLK}	16.67	-	-	ns	
DCLK Low Level Width	t_{WCL}	0.3	-	-	ns	
DCLK High Level Width	t_{WCH}	0.3	-	-	ns	
DE	Set-up Time	t_{DES}	5	-	-	ns
	Hold Time	t_{DEH}	10	-	-	ns
	Horizontal Period	t_{HP}	750	800	900	t_{CLK}
	Horizontal Valid	t_{HV}	640			t_{CLK}
	Horizontal Blank	t_{HBK}	110	160	260	t_{CLK}
	Vertical Period	t_{VP}	515	525	560	t_{HP}
	Vertical Valid	t_{VV}	480			t_{HP}
	Vertical Blank	t_{VBK}	35	45	80	t_{HP}
Vertical Frequency	f_v	55	60	65	Hz	
Data Set-up Time	t_{DS}	4	-	-	ns	
Data Hold Time	t_{DH}	8	-	-	ns	

Preliminary

The contents of this document are confidential and must not be disclosed wholly or in part to any third part without the prior written consent of AMPIRE CO., LTD

7-3 Color Data Assignment

COLOR	Input Data	R DATA						G DATA						B DATA					
		R5 MSB	R4	R3	R2	R1	R0 LSB	G5 MSB	G4	G3	G2	G1	G0 LSB	B5 MSB	B4	B3	B2	B1	B0 LSB
BASIC COLOR	BLACK	0	0	0	0	0	0	0	0	0	0	0	0	0	0	0	0	0	0
	RED(63)	1	1	1	1	1	1	0	0	0	0	0	0	0	0	0	0	0	0
	GREEN(63)	0	0	0	0	0	0	1	1	1	1	1	1	0	0	0	0	0	0
	BLUE(63)	0	0	0	0	0	0	0	0	0	0	0	0	1	1	1	1	1	1
	CYAN	0	0	0	0	0	0	1	1	1	1	1	1	1	1	1	1	1	1
	MAGENTA	1	1	1	1	1	1	0	0	0	0	0	0	1	1	1	1	1	1
	YELLOW	1	1	1	1	1	1	1	1	1	1	1	1	0	0	0	0	0	0
	WHITE	1	1	1	1	1	1	1	1	1	1	1	1	1	1	1	1	1	1
RED	RED(0)	0	0	0	0	0	0	0	0	0	0	0	0	0	0	0	0	0	0
	RED(1)							0	0	0	0	0	0	0	0	0	0	0	0
	RED(2)							0	0	0	0	0	0	0	0	0	0	0	0
	RED(62)	1	1	1	1	1	0	0	0	0	0	0	0	0	0	0	0	0	0
RED(63)	1	1	1	1	1	1	0	0	0	0	0	0	0	0	0	0	0	0	
GREEN	GREEN (0)	0	0	0	0	0	0	0	0	0	0	0	0	0	0	0	0	0	0
	GREEN (1)	0	0	0	0	0	0	0	0	0	0	0	1	0	0	0	0	0	0
	GREEN (2)	0	0	0	0	0	0	0	0	0	0	1	0	0	0	0	0	0	0
	GREEN (62)	0	0	0	0	0	0	1	1	1	1	1	0	0	0	0	0	0	0
GREEN (63)	0	0	0	0	0	0	1	1	1	1	1	1	0	0	0	0	0	0	
BLUE	BLUE (0)	0	0	0	0	0	0	0	0	0	0	0	0	0	0	0	0	0	0
	BLUE (1)	0	0	0	0	0	0	0	0	0	0	0	0	0	0	0	0	0	1
	BLUE (2)	0	0	0	0	0	0	0	0	0	0	0	0	0	0	0	0	1	0
	BLUE (62)	0	0	0	0	0	0	0	0	0	0	0	0	0	0	0	0	0	1
BLUE (63)	0	0	0	0	0	0	0	0	0	0	0	0	0	0	0	0	1	0	

- NOTE : (1) Definition of Gray Scale , Color(n) : n is series of Gray Scale
 The more n value is the bright Gray Scale
 (2) Data : 1-High , 0-Low

Preliminary

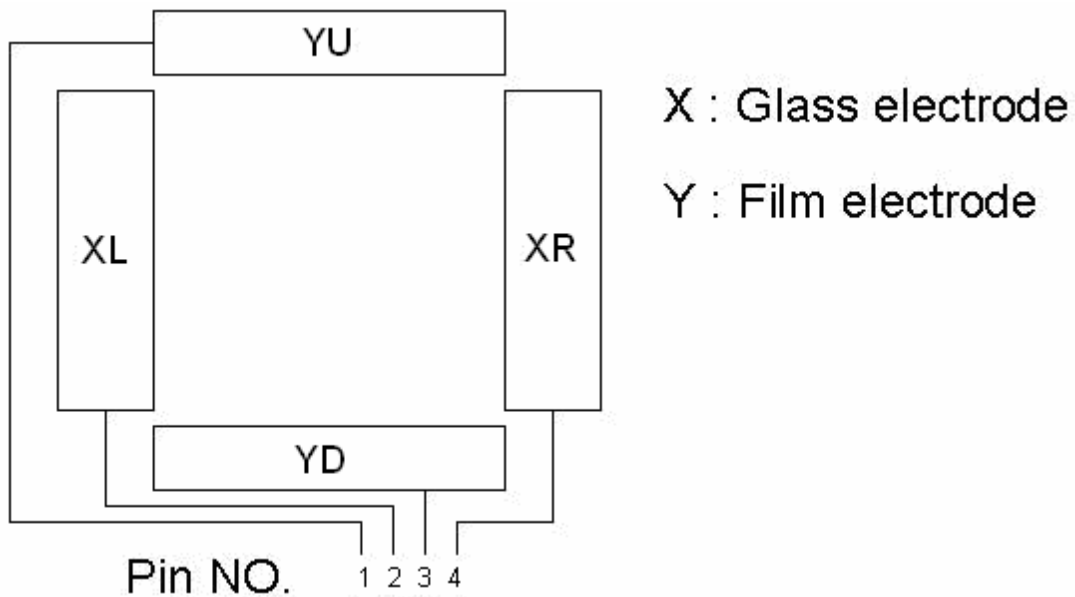
The contents of this document are confidential and must not be disclosed wholly or in part to any third part without the prior written consent of AMPIRE CO., LTD

8. TOUCH SCREEN PANEL SPECIFICATIONS

8.1 Touch Screen Panel Characteristics

1. Operation Temperature : $-10^{\circ}\text{C} \sim +60^{\circ}\text{C}$
Storage Temperature : $-20^{\circ}\text{C} \sim +70^{\circ}\text{C}$
2. Life Time : > 1,000,000 times
3. Linearity : $\leq 1.5\%$
4. TOP ITO Film : Anti-Glare Hard Coating & Anti-Newton Ring
Sheet Resistance : $450\pm 50\Omega$;
BOTTOM GLASS : Sheet Resistance : $500\pm 50\Omega$
5. Tai Type : FPC Gold-plated
6. Meet for RoHS.
7. All Tolerance Without Marked : ± 0.3

8.2 Touch Screen Pane & Interface



Pin No.	Symbol	I/O	Function
1	YU	Top	Top electrode – differential analog
2	XL	Left	Left electrode – differential analog
3	YD	Bottom	Bottom electrode – differential analog
4	XR	Right	Right electrode – differential analog

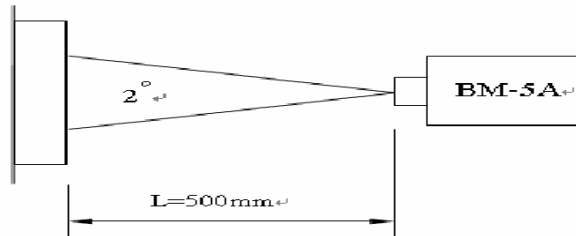
Preliminary

The contents of this document are confidential and must not be disclosed wholly or in part to any third part without the prior written consent of AMPIRE CO., LTD

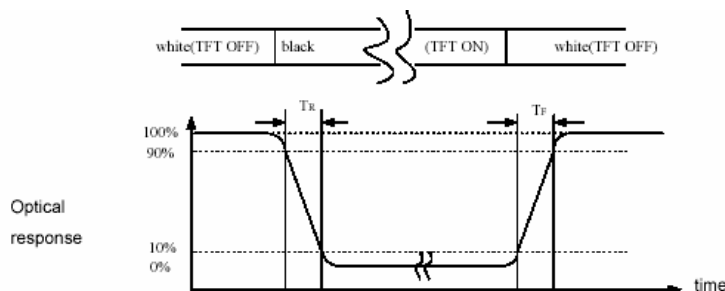
9. OPTICAL CHARACTERISTICS

Item	Symbol	Conditon	Min.	Typ.	Max.	Unit	Note	
Response Time	$T_r + T_f$	$\Theta = \Phi = 0^\circ$	-	30	50	ms	(1)	
Contrast ratio	CR		200	300	-	-	(2)(3)	
Viewing Angle	Vertical	Θ	$CR \geq 10$	80	100	-	Deg.	(5)
	Horizontal			Φ	120	140		
Luminance	L	$\Theta = \Phi = 0^\circ$	180	220	-	cd/m ²	(3)(4)	
Luminance Uniformity	ΔL		70	80	-	%	(3)(4)	
Color chromaticity	Red	Rx	$\Theta = \Phi = 0^\circ$	TBD	TBD	TBD	-	(3)
		Ry						
	Green	Gx		TBD	TBD	TBD		
		Gy						
	Blue	Bx		TBD	TBD	TBD		
		By						
	White	Wx		0.273	0.313	0.353		
		Wy		0.289	0.329	0.369		

NOTE : Measure conditions : 25°C±2°C , 60±10%RH under 10Lux , in the dark room by BM-5A(TOPCON) ,viewing 2° , VCC=3.3V , VDD=3.3V



(1) Definition of Response Time (White-Black)



(2) Definition of Contrast Ratio

Measure contrast ratio on the below 5 points(refer to figure,#1~#5point) and take the average value

Contrast ratio is calculated with the following formula :

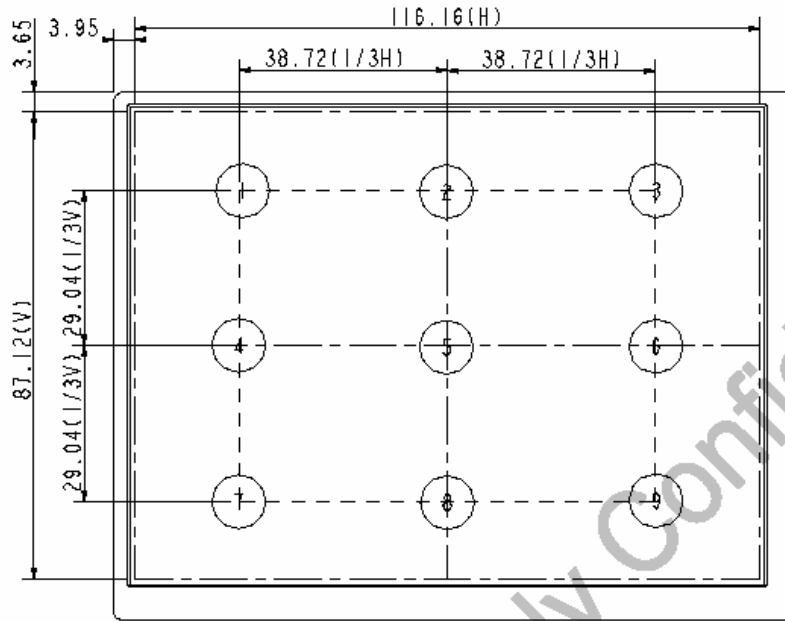
Contrast Ratio(CR)=(White)Luminance of ON ÷ (Black)Luminance of OFF

Preliminary

The contents of this document are confidential and must not be disclosed wholly or in part to any third part without the prior written consent of AMPIRE CO., LTD

(3) Definition of Luminance :

Measure white luminance on the same 5 points and take the average value



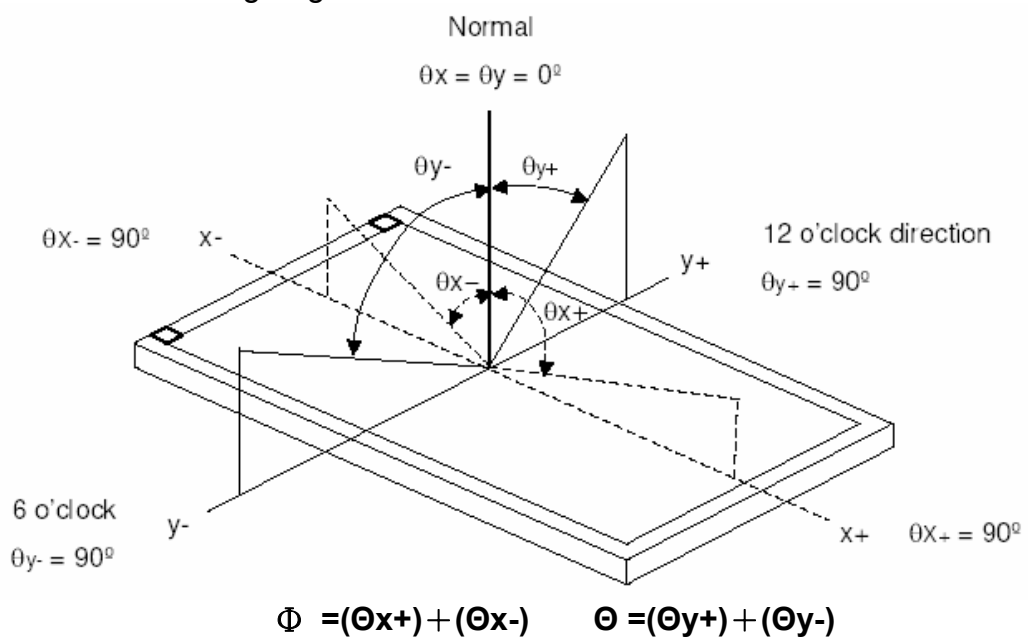
(4) Definition of Luminance Uniformity :

Measured Maximum luminance[L(MAX)] and Minimum luminance[L(MIN)] on the 5 points

Luminance Uniformity is calculated with the following formula :

$$\Delta L = [L(\text{MAX}) / L(\text{MIN}) - 1] \times 100$$

(5) Definition of Viewing Angle



Preliminary

The contents of this document are confidential and must not be disclosed wholly or in part to any third part without the prior written consent of AMPIRE CO., LTD

10. RELIABILITY TEST CONDITIONS

ITEM	CONDITIONS
HIGH TEMPERATURE OPERATION	60°C , 240Hrs
HIGH TEMPERATURE AND HIGH HUMIDITY OPERATION	60°C , 90%RH , 240Hrs
HIGH TEMPERATURE STORAGE	70°C , 240Hrs
LOW TEMPERATURE OPERATION	-10°C , 240Hrs
LOW TEMPERATURE STORAGE	-20°C , 240Hrs
THERMAL SHOCK	-10°C(1Hr) ~60°C(1Hr) 200Cycle
SHOCK (NON-OPERATIONS)	<ul style="list-style-type: none"> ● 980m/S²(equal t0 100G),6ms ● (1/2 Sine wave),XYZ
VIBRATION (NON-OPERATIONS)	<ul style="list-style-type: none"> ● Frequency range:8~33.3Hz 1stoke:1.3mm Vibration sinusoidal wave, perpendicular axis(both x,z axis:2Hrs,y axis :4Hrs) 1 sweep:2.9G , 33.3~400Hz 1cycle : 15min

NOTE : Judgment standard

The Judgment of the above test should be made as follow :

Pass : Normal display image with no obvious non-uniformity and no line defect . Partial transformation of the module parts should be ignored.

Fail : No display image , obvious non-uniformity or line defect

Preliminary

The contents of this document are confidential and must not be disclosed wholly or in part to any third party without the prior written consent of AMPIRE CO., LTD

11. OUTLINE DIMENSION

